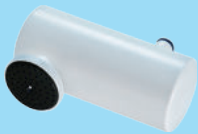


CleanSpray



Baclyser<sup>®</sup> Tap and Shower



Baclyser<sup>®</sup> In-Line



AquaMedix<sup>®</sup>

AVAILABLE THROUGH  
**APEX**  
WATER + PROCESS

Contact Apex for More Information:

PHONE: (844) 603-4077

EMAIL: info@teamapex.com

P/N	Product Name	Flow Rate	Connection	Adaptor Kit	Filter Max. Life*	Description
1690	CleanSpray FX Faucet Filter (3M)	2.0 gpm (60 psi)	48116		3 Months	CleanSpray FX Faucet Filter 0.20 µm filter P/N:1690. Bacterial Reduction (>Log 7). Max Use 3 Months. (Requires Compliance Connector P/N: 48116). CleanSpray Faucet Compliance Connector Kit, P/N: 48116. Includes one 15/16"-27 M x 55/64"-27 M adapter and extra flat gasket seal.
48116	CleanSpray Faucet Compliance Connector (CCK)		55/64" - 27 F	QCK17		Additional adapters available in QCK16
1302	CleanSpray HSC HandShower+Filter, Chrome	2.1 gpm (80 psi)	1/2" MIP		3 Months	CleanSpray HandShower+Filter Chrome, 0.20 µm filter P/N: 1302. Bacterial Reduction (>Log 7). Maximum filter life 3 months.
1413	HandShower Replacement Filters (3M)					Chrome showerhandle with multiple spray patterns (included 3 month filter in handle). Replaceable cartridge insert (for use with CleanSpray shower handle).

P/N	Product Name	Flow Rate	Connection	Adaptor Kit	Filter Max. Life*	Description
49011	Baclyser TL (2M) Tap	2.6 gpm (72 psi)	Series 40 Quick-release coupling	QCK16	1 or 2 Months	Baclyser Tap TL tap filter laminar flow 0.20 µm filter P/N: 49010, 49110. Bacterial Reduction (>Log 7). Quick-release coupling required. Maximum filter life 1 or 2 months.
49110	Baclyser TL (1M) Tap		Series 40 Quick-release coupling	QCK16		The disposable TL with laminar outlet are individually barcoded for traceability. Filters are easily changed via the quick release coupling.
49011	Baclyser TR (2M) Tap or Shower	2.6 gpm (72 psi)	Series 40 Quick-release coupling	QCK16	1 or 2 Months	Baclyser TR Fixed Shower or Tap 0.20 µm filter P/N: 49011, 49111. Bacterial Reduction (>Log 7). Quick-release coupling required. Maximum filter life 1 or 2 months.
49111	Baclyser TR (1M) Tap or Shower		Series 40 Quick-release coupling	QCK16		The disposable TR with shower rose outlet are individually barcoded for traceability. Filters are easily changed via the quick release coupling.
49012	Baclyser S (2M) Shower	2.6 gpm (72 psi)	1/2" MIP		1 or 2 Months	Baclyser S Shower Handle 0.20 µm filter P/N: 49012, 49112. 1/2" MIP. Bacterial Reduction (>Log 7). Maximum filter life 1 or 2 months.
49112	Baclyser S (1M) Shower					The disposable S shower has a anti-microbial plated shower rose to help prevent retrograde contamination. Each individually barcoded for traceability.
49414	AS WallShower (4M)	5.8 gpm (72 psi)	1/2" MIP		4 Months	AS WALLSHOWER 0.20 µm Shower Filter. P/N: 49414. Bacterial Reduction (>Log 7). Connection 1/2" MIP. Maximum filter life 4 months.
						The disposable AS WallShower connects to fixed shower arm (1/2" coupling required).

P/N	Product Name	Flow Rate	Connection	Adaptor Kit	Filter Max. Life*	Description
49404	Baclyser IL3	3.4 gpm (72 psi)	1/2" MIP	QCK05 QCK07 QCK09	6 Months	Aqua-free, Baclyser IL 0.20 µm In-Line filter. P/N: 49404, 49406, 49408. Bacterial Reduction (>Log 7). Connection 1/2" MIP. Maximum filter life 6 months.
49406	Baclyser IL5	5.8 gpm (72 psi)	1/2" MIP	QCK05 QCK07 QCK09	6 Months	High flow rate, high capacity multi-use filter for ice machines, fixed showers, under sink, drinking fountain, and other inline applications. 1/2" male pipe connection. Quick Connect fittings for easy exchange available in QCK05, QCK07, and QCK09 Quick Connect Kits.
49408	Baclyser IL10	7.9 gpm (72 psi)	1/2" MIP	QCK05 QCK07 QCK09	6 Months	

## Inline Combination Ice-Machine Filter



## In-Line Cartridge



## Laminar Flow Stream



P/N	Product Name	Flow Rate	Connection	Filter Max. Life*	Description	
48122	IC Inline Combination Ice Machine Filter	3.8 gpm (75 psi)	3/8" - Comp Male	QCK08 48120	6 Months	ICInlineCombinationIceMachineFiltration0.20 µm bacterial filter, 0.5 µm sediment prefilter. P/N: 48122. Bacterial Reduction (>Log 7).
48123	IC Inline Combination Ice Machine Filter Replacement Kit					An inline combination ice machine configuration utilizes a sub micron prefilter plumbed in series with a 0.20 micron bacteria filter. This system provides versatility with a standard 10" housing to address scaling or other filtration necessities using readily available commercial filters.

P/N	Product Name	Flow Rate	Connection	Filter Max. Life*	Description
1042	AquaMedix Micro MF10 (10 inch)	10.5gpm (72 psi)	For Use With Standard 10"Housing	6 Months	AquaMedix - Micro 10" and 20" 0.20 µm filter, P/N:1042, 1379. Bacterial Reduction (>Log 7). Maximum filter life 6 months.
1379	AquaMedix Micro MF20 (20 inch)	10.5gpm (72 psi)	For Use With Standard 20"Housing	6 Months	For use in standard cartridge housings. 2.5 GPM at 30 PSI (max. flowrate 10 GPM). Applications: Inline, Ice Machines, etc.
1009	AquaMedix Dual Stage CL CarbonMicro DS-10 (10 inch)	3.0 gpm (60 psi)	For Use With Standard 10"Housing	6 Months	Dual Stage Filter MF10-CL, 0.20 µm filter P/N: 1009. Bacterial Reduction (>Log 7). Maximum filter life 6 months.  Carbon shell pre-filter (5 µm) eliminates chlorine, heavy metals, drug residues, bad taste and other contaminants. Micro-Filter removes bacteria.

P/N	Product Name	Flow Rate	Connection	Description
1140004	Laminar Stream, Pack of 50	2.2 gpm max.	15/16"-27 M	1140004 Laminar Stream - 2.2 gpm max. aerator, 15/16"-27 male, Pack of 50
1141004	Laminar Stream, Pack of 50	2.2 gpm max.	55/64"-27 F	1141004 Laminar Stream - 2.2 gpm max. aerator, 55/64"-27 female. Pack of 50

## Comprehensive Installation Kits

P/N	Product Name	Description
QCK05	Baclyser InLine Series-50 Replacement Kit	The QCK05 Baclyser InLine Series-50 Replacement Kit is recommended for the direct installation and future maintenance of Baclyser InLine (IL) filters where existing series 50-Series quick connect fittings are installed. The Series-50 Replacement Kit converts the male 1/2" standard pipe connections on Baclyser filters to be compatible with 50-Series quick connect fittings already installed in the plumbing system. This combination of parts also simplifies the future change-out of the Baclyser filters on facility equipment by providing a standardized interface and minimizes any need to modify existing plumbing or change out shut off valve fittings.
QCK07	BaclyserInLineSeries-40 New Installation Kit, Chrome Plated Brass	The QCK07 InLine Series-40 Quick Change Kit is recommended as an option for the installation and future maintenance of the Baclyser InLine (IL) filters. This kit can be used where installations are being plumbed for under sink or other inline applications utilizing readily available stainless steel braided supply lines. Future maintenance of the Baclyser InLine filters is simplified by providing a quick-connect standardized interface for each change out. Each fitting is equipped with an independent shut-off valve to minimize spills and allow filter change outs under pressure without needing to shut off the water supply.
QCK08	Post-Installation Disinfection Port	The QCK08 Post-Installation Disinfection Port is recommended as an option for the installation and maintenance of Baclyser InLine filters in ice machine or inline applications when disinfection is required as part of the preventative maintenance schedule at filter installation. This adapter assembly can remain in the system after the initial set up as filters are exchanged and provides a reusable interface for connecting filters and introducing disinfection chemicals to the system. For use with Disinfection Syringe Kit (P/N: 48120).
48120	DSK - Disinfection Syringe Kit	50 mL syringe with 24" flexible tubing and luer & barb fitting for use with AquaMedix QCK08 Post-installation Disinfection Port.
QCK09	Baclyser InLine Screw-On Push Installation Connect Kit	The QCK09 InLine Screw-On Quick Connect Kit is recommended as an option for the installation and maintenance of Baclyser InLine filters in ice machine or inline applications. The InLine Screw-On Quick Connect Kit can simplify the installation and maintenance of the Baclyser InLine filters on facility equipment and provide a standardized interface. Screw on Push Connections for the Baclyser IL3, IL5 & IL10.
QCK16	Baclyser Faucet Tap Connect Kit	The QCK16 Baclyser Faucet Tap Connect Kit helps installers identify what parts are needed to connect Baclyser filters to a variety of faucet thread patterns. The kit includes female stainless steel quick-coupling that will directly fit and screw onto most standard faucet threads. Also included are five common adapters required to convert a faucet to standard size male threads to which the Quick-Coupling will then connect. Once the correct parts have been identified, installers are encouraged to buy only the specific parts needed from the kit for each install required.
QCK17	CleanSpray Faucet Tap Connect Kit	The CleanSpray Faucet Connection Kit helps end users identify what parts are needed to connect CleanSpray filters to faucets for a variety of thread options. This kit includes the most common adapters that will fit most standard faucet threads and alternative adapters for less common threads. All included fittings convert the faucet connection point to 55/64"-27 Male threads to accept the CleanSpray Compliance Connector (P/N: 48116) which features a stainless steel 55/64"-27 Female connection.

To see a full product catalog, please call us at (952) 479-0636 or online at [info@aquamedix.net](mailto:info@aquamedix.net).

AquaMedix maintains an array of conventional and specialty adapters, fittings, and components in inventory ready to ship to simplify installations and save time sourcing parts and materials. With experience in a variety of installations, AquaMedix staff is ready to help you identify which specific parts will be needed for even the most difficult installs.

AquaMedix products use the most common plumbing components and sizes which provide the ability to use a variety of products in various combinations with each other to address specific filtration needs. A variety of solutions are available to provide the customers exactly what is needed for their application.

\*Filter life dependant on incoming water quality and usable life may vary based on region.